



# Simmons Estates

EST: 1996



## **Darwin House, Borehamwood,**

**£375,000**

- Two Double Bedrooms
- Two Tiled Bathrooms (En Suite)
- Immaculately Presented Throughout
- Modern Development
- South-facing wrap around balcony
- Third Floor Apartment
- Large Open Plan Kitchen/Living/Dining
- Close To The Town Centre And Amenities
- Spacious with Plenty of Storage
- Allocated Parking With A Dedicated Bay

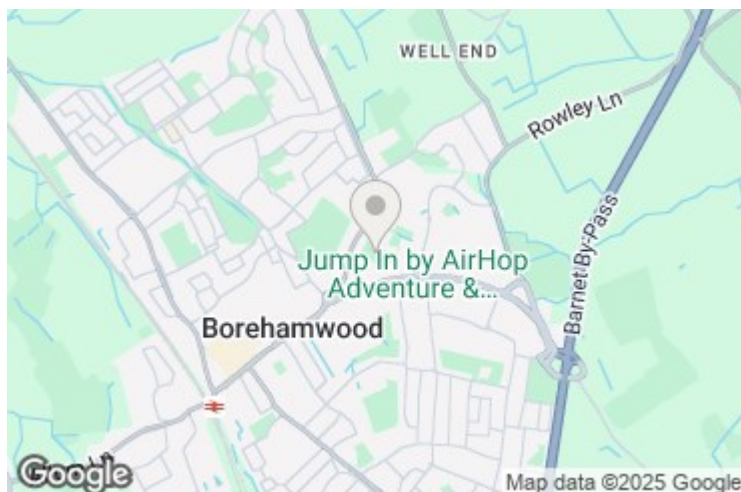
A beautifully presented two-bedroom, two-bathroom apartment situated on the top floor of the prestigious Hertsmere Mews development in Borehamwood. Lovingly decorated by the current owners, the property offers an exceptional standard of finish and a true showhome feel, making it one of the finest apartments available in the area.

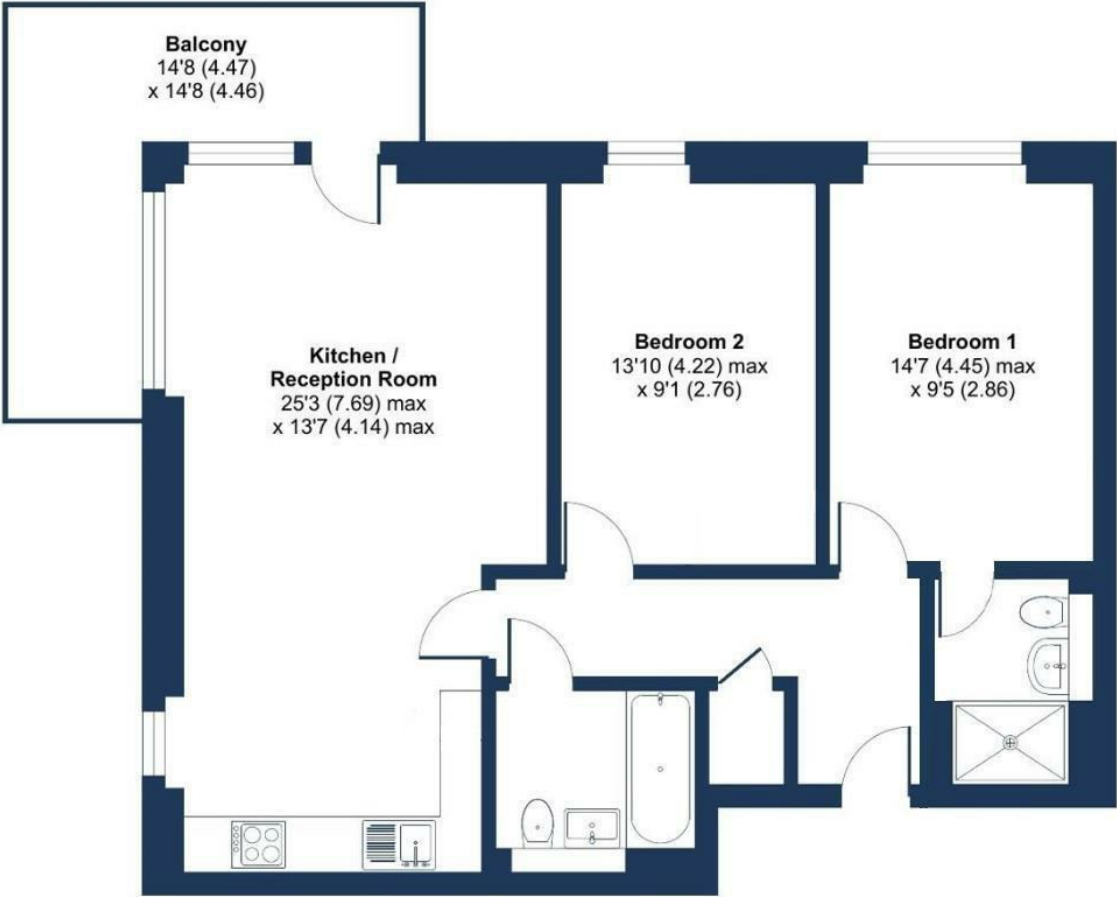
Upon entering the apartment, you are welcomed by a spacious hallway with excellent storage, setting the tone for the generous proportions throughout. The home opens into a bright and airy open-plan kitchen, living and dining area, enhanced by its south-facing, double-aspect layout which allows natural light to pour in throughout the day. The modern fitted kitchen includes integrated appliances and ample workspace, making it ideal for everyday living and entertaining. From the reception room, lead directly onto an impressive wrap-around private balcony, offering the perfect spot to relax, dine, or enjoy all-day sunshine.

Both bedrooms are well-proportioned doubles. The principal bedroom features fitted wardrobes and a contemporary en-suite shower room, while the second bedroom also benefits from excellent natural light and is served by a modern family bathroom. The apartment is beautifully maintained throughout, providing a calm and contemporary living environment.

The development offers a range of desirable amenities including EV charging points, a secure video entry system, and access to a large, secure communal outbuilding used for bicycle storage and other personal items. The property comes with an allocated parking space, with additional visitor parking available on a first-come, first-served basis.

Hertsmere Mews, built by Bellway Homes, is a peaceful and well-kept private development located just a short walk from Borehamwood's vibrant High Street. Residents benefit from easy access to local shops, cafés, restaurants, and excellent transport connections via Elstree & Borehamwood Station, providing fast links into Central London.





THIRD FLOOR

